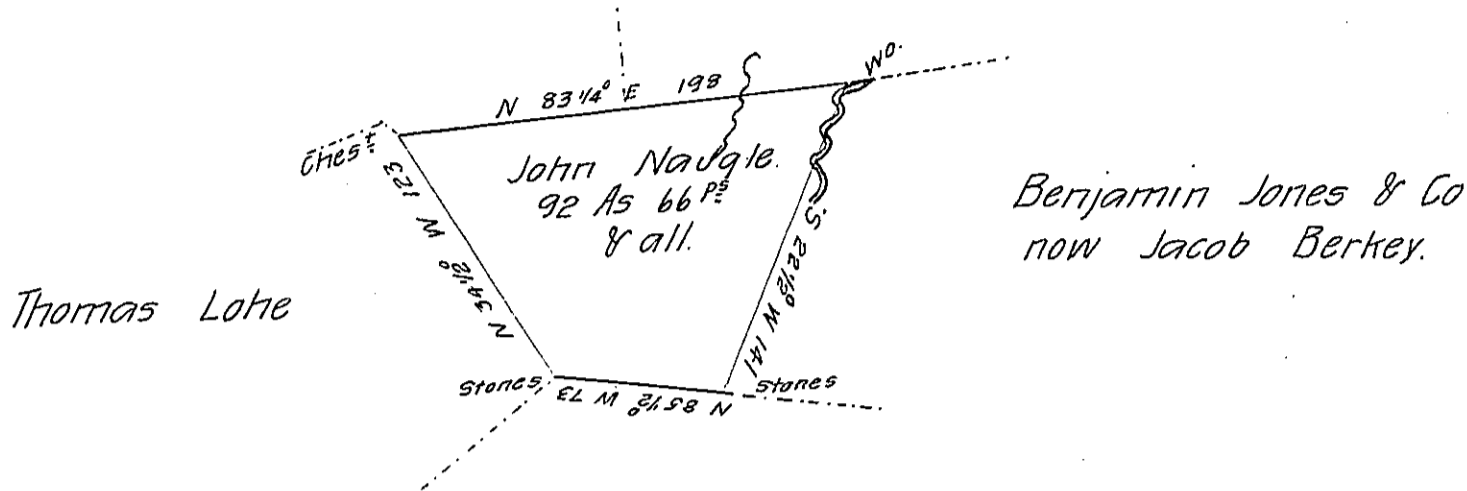


Patrick Campbell
now Christian Kaltenbaugh.



Philip Shaffer

N. B. John Naugle is in
the occupancy of this
Tract.
J. P. Walker C.S.

Situate near Shade Creek in Paint township Somerset
County, Surveyed on the 17th day of June 1858 in pursuance of
a warrant dated the 20th day of February A. D. 1858 including
his improvement first begun in year 1835

pr Josiah P. Walker. C.S.

To John Rowe Esq }
Surveyor General. }

IN TESTIMONY that the above is a copy of the original remaining on file in
the Department of Internal Affairs of Pennsylvania, made
conformably to an Act of Assembly approved the 16th day of
February, 1833, I have hereunto set my Hand and caused
the Seal of said Department to be affixed at Harrisburg,
this twenty-first day of February 1906.

Isaac R. Brown
Secretary of Internal Affairs.